

PARTS AND SERVICE MANUAL
FOR THE
23" COMPACT FIREPLACE

 Dimplex[®]

TABLE OF CONTENTS

OPERATION	PAGE 1
PARTS DRAWING	PAGE 3
PARTS LIST	PAGE 4
LIGHT BULB REPLACEMENT	PAGE 5
HEATER ON/OFF SWITCH REPLACEMENT	PAGE 6
THERMOSTAT CONTROL REPLACEMENT	PAGE 7
FLAME MOTOR/FLAME ROD REPLACEMENT	PAGE 8
HEATER ASSEMBLY REPLACEMENT	PAGE 9
CIRCUIT BOARD REPLACEMENT	PAGE 10
POWER CORD REPLACEMENT	PAGE 11
TERMINAL BLOCK/CAPACITOR REPLACEMENT	PAGE 12

OPERATION

The fireplace is supplied with an integrated on/off remote control.

Note: Ensure that the fireplace 3 position switch is set to the remote control setting.

To operate, push the ON button to turn fireplace on, push the OFF button to turn the fireplace off.

BATTERY REPLACEMENT

To replace the battery, slide battery cover open on the hand held transmitter.

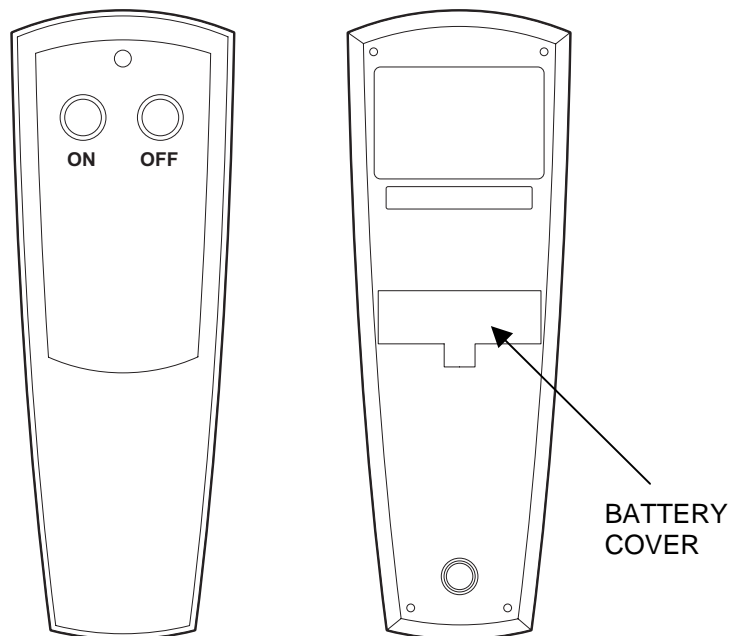
Correctly install one 12 volt (A23) battery in the battery holder. Close the batter cover.

Resetting the temperature cutoff switch

The heater is protected with a safety device to prevent overheating. Should the heater overheat, an automatic cut out will turn the heater off and it will not come back on without being reset. It can be reset by switching the ON/OFF SWITCH to OFF and waiting 5 minutes before switching the unit back on.

Caution

If you need to continuously reset the heater, unplug the unit and call your local dealer.



Three position ON/OFF switch

The switch has two ON positions marked with “-“ and “=“.

The “-“ position is for manual operation.

In this position the built-in remote control is bypassed.

The “=” position is for operating the unit with the provided remote control.

When in “=” position the unit is operated with the ON and OFF buttons of the remote control.

When the switch is in the center position the unit is off.

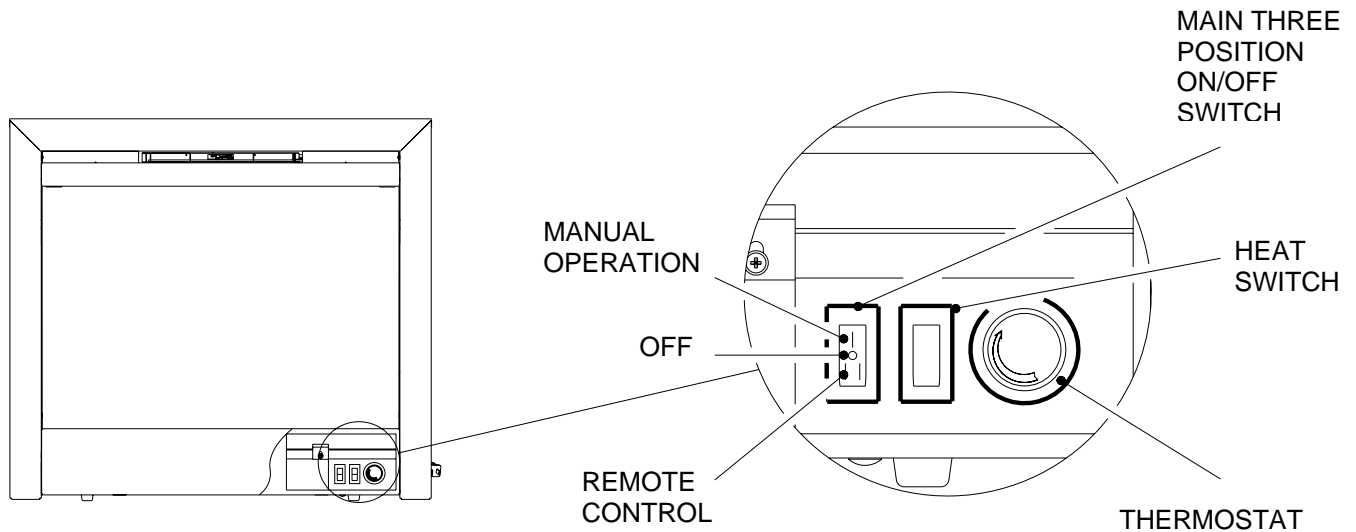
Heat switch

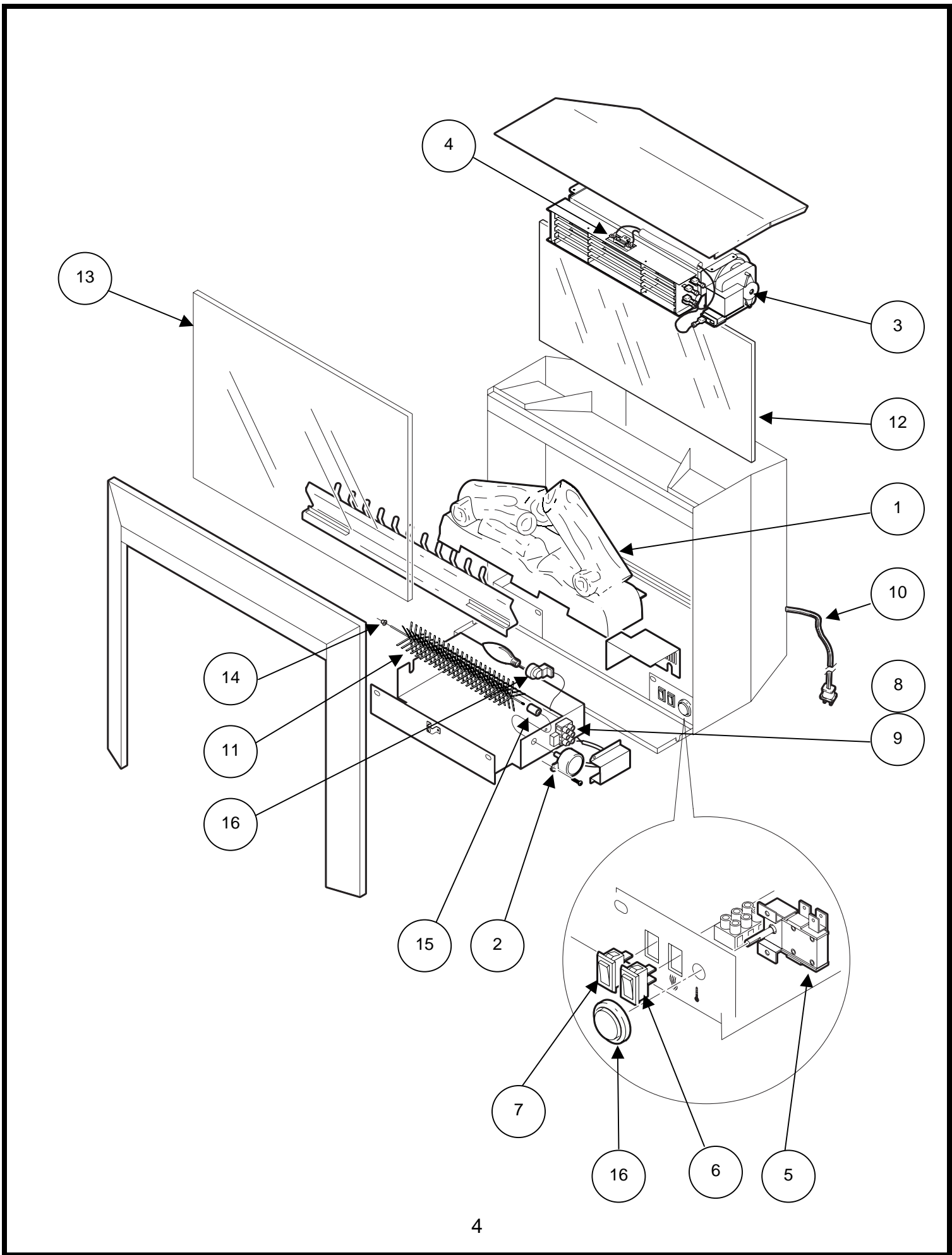
The HEAT ON/OFF SWITCH supplies power to the heater fan and the heater element.

When the switch is in the ON position the heater operates if the thermostat calls for heat.

Heater thermostat control

To adjust the temperature to your individual requirements, turn the thermostat control clockwise all the way to turn on the heater. When the room reaches the desired temperature, turn the thermostat knob counter clockwise until you hear a click. Leave in this position to maintain the room temperature at this setting. For additional heat, turn clockwise until you hear the click again and the heater will turn on.





REPLACEMENT PARTS

COMPACT FIREPLACE

PART NO. 6901740000
MOD LEVEL: NONE
MADE IN: CHINA

REPLACEMENT PART	REPLACEMENT PART NO.
1. LOGSET	0438200700RP
2. FLAME MOTOR	2000220100RP
3. HEATER ASSEMBLY	2200490300RP
4. CUTOUT	2300270100RP
5. THERMOSTAT	2300150100RP
6. HEATER SWITCH	2800070200RP
7. ON/OFF SWITCH	2800071100RP
8. CAPACITOR	3200030100RP
9. TERMINAL BLOCK	4000070100RP
10. CORD SET	4100090100RP
11. REFLECTOR ROD	5900340100RP
12. MIRROR	5900350100RP
13. FRONT GLASS	5900380100RP
14. BUSHING, SNAP-IN	8500000400RP
15. FLICKER CONNECTOR	8500680100RP
16. CONTROL KNOB	8800000300RP
17. LAMP HOLDER ASSEMBLY	4200120800RP
18. HEYCO STRAIN RELIEF	8500260003RP
19. REMOTE (INTEGRAL)	3000400100RP

If unit was operating prior to servicing allow at least 10 minutes for light bulbs and heating element to cool off to avoid accidental burning of skin.

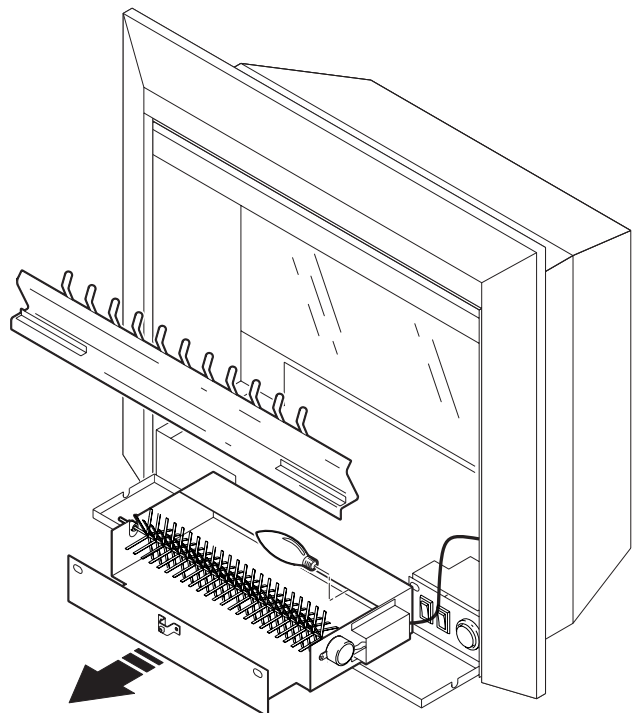
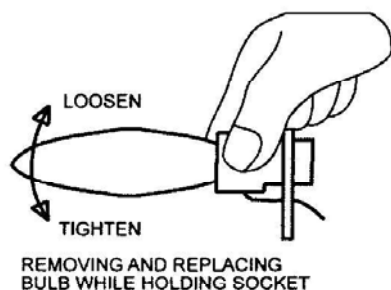
Disconnect power before attempting any maintenance or cleaning to reduce the risk of electric shock or damage to persons.

Light bulbs need to be replaced when you notice a dark section of the flame. There are four bulbs under the log set which generate the flames and embers.

It is a good idea to replace all of the light bulbs at one time if they are close to the end of their rated life. Group replacement will reduce the number of times you need to open the unit to replace the light bulbs.

BULB REPLACEMENT

1. Open the front control cover.
2. Remove front glass by removing the 2 outer screws holding the glass clips.
3. Remove the log grate by removing the 4 mounting screws.
4. Remove the log set by lifting straight up.
5. Slide the light assembly slightly out of the insert approximately 1".
6. Examine bulbs to determine which bulbs require replacement.
7. Hold the socket while unscrewing the old bulb.
8. Hold the socket while screwing in the new bulb.
9. Reassemble in the reverse order as above.



LIGHT BULB REQUIREMENTS

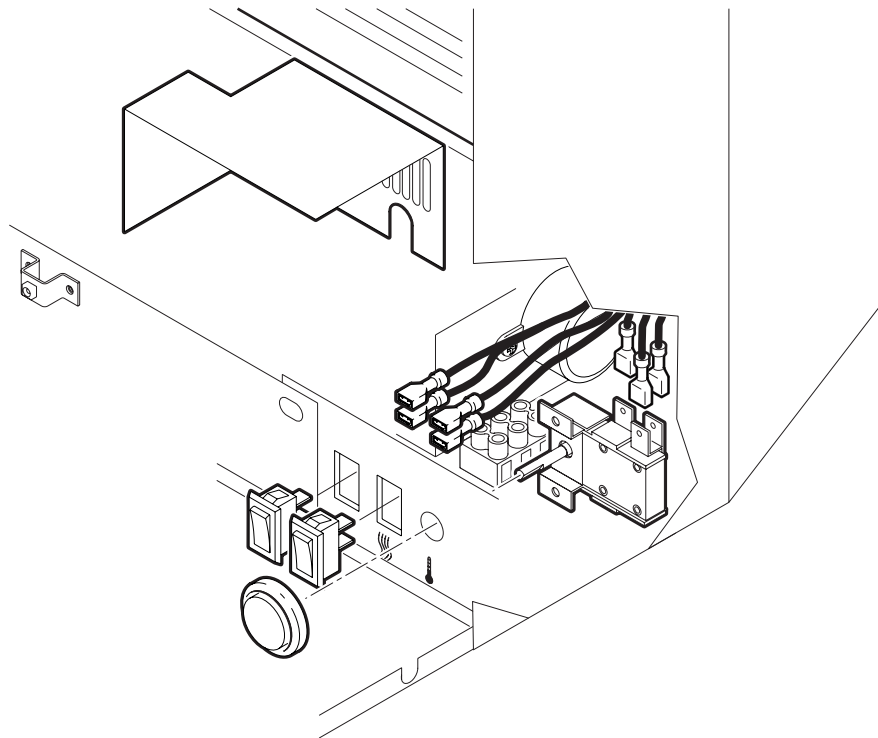
Quantity of 4 clear chandelier or candelabra bulbs with an E-12 (small) socket base, 60 watt rating.

If unit was operating prior to servicing allow at least 10 minutes for light bulbs and heating element to cool off to avoid accidental burning of skin.

Disconnect power before attempting any maintenance or cleaning to reduce the risk of electric shock or damage to persons.

TO REPLACE MAIN ON/OFF AND HEATER SWITCHES

1. Open the front control cover.
2. Remove front glass by removing the 2 outer screws holding the glass clips.
3. Remove the log grate by removing the 4 mounting screws.
4. Remove the log set by lifting straight up.
5. Lay the insert on its back and remove the 2 switch control cover screws located on the bottom of the insert.
6. Locate the switch to be replaced and disconnect the wiring clips and connections noting their original locations.
7. Depress the retainer clips on the rear of the switch and push the switch out of the rear of the cover.
8. Reassemble in the reverse order as above.

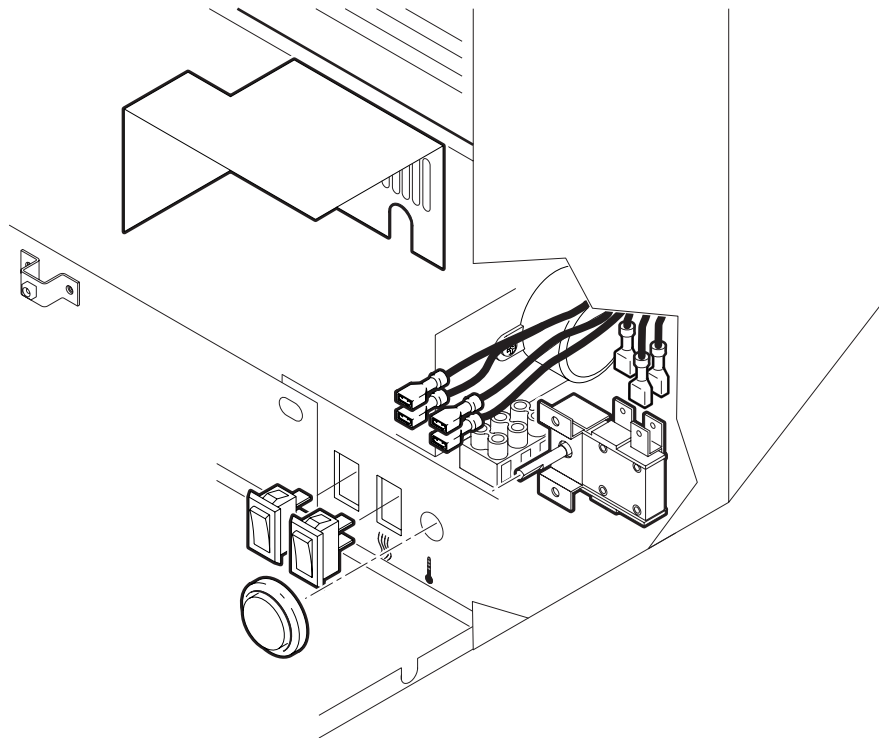


If unit was operating prior to servicing allow at least 10 minutes for light bulbs and heating element to cool off to avoid accidental burning of skin.

Disconnect power before attempting any maintenance or cleaning to reduce the risk of electric shock or damage to persons.

TO REPLACE THERMOSTAT CONTROL

1. Open the front control cover.
2. Remove front glass by removing the 2 outer screws holding the glass clips.
3. Remove the log grate by removing the 4 mounting screws.
4. Remove the log set by lifting straight up.
5. Lay the insert on its back and remove the 2 switch control cover screws located on the bottom of the insert.
6. Locate the thermostat control and disconnect the wiring clips and connections noting their original locations.
7. Remove the thermostat control knob by pulling straight out.
8. Remove the 2 mounting screws and remove the old thermostat control.
9. Reassemble in the reverse order as above.

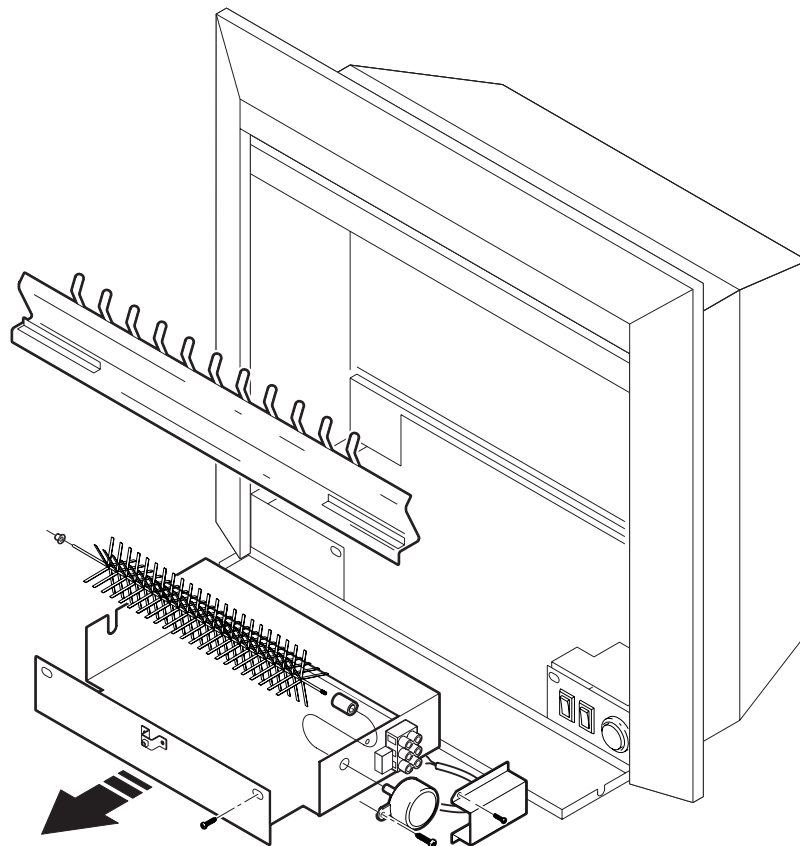


If unit was operating prior to servicing allow at least 10 minutes for light bulbs and heating element to cool off to avoid accidental burning of skin.

Disconnect power before attempting any maintenance or cleaning to reduce the risk of electric shock or damage to persons.

TO REPLACE FLAME MOTOR/REFLECTOR ROD

1. Open the front control cover.
2. Remove front glass by removing the 2 outer screws holding the glass clips.
3. Remove the log grate by removing the 4 mounting screws.
4. Remove the log set by lifting straight up.
5. Slide the light assembly slightly and lift out of the insert being careful not to damage any of the wiring.
6. Remove the reflector rod from the flame motor by pulling the end of the rod to the left and separating it from the rubber sleeve.
7. Remove the rubber sleeve from the motor shaft.
8. Disconnect the flame motor wire from the terminal block, noting their original locations
9. Remove the 2 motor mounting screws and remove the flame motor.
10. Discard the old flame motor.
11. Reassemble in the reverse order as above

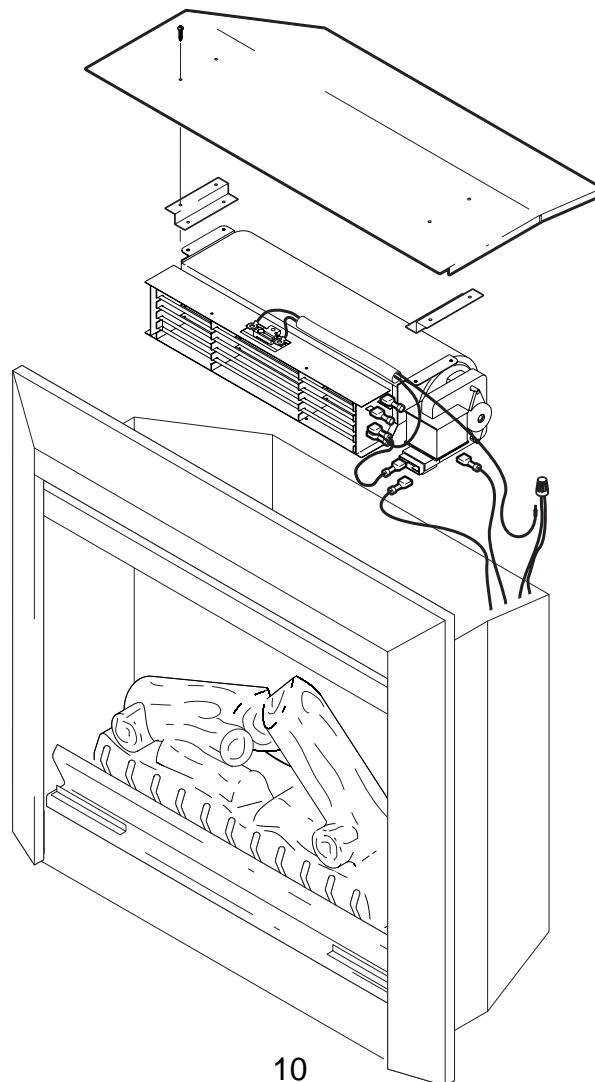


If unit was operating prior to servicing allow at least 10 minutes for light bulbs and heating element to cool off to avoid accidental burning of skin.

Disconnect power before attempting any maintenance or cleaning to reduce the risk of electric shock or damage to persons.

TO REPLACE THE HEATER ASSEMBLY

1. Remove the 4 retaining screws and lift the top cover off of the insert being careful not to damage the wiring.
2. Remove the 4 heater mounting screws from the top of the top cover to separate the heater assembly.
3. Remove the 2 heater mounting brackets from the heater assembly.
4. Disconnect the 2 heater switch leads from the heater noting their original locations.
5. Disconnect the thermal cut-out wire from the wire nut.
6. Reassemble in the reverse order as above

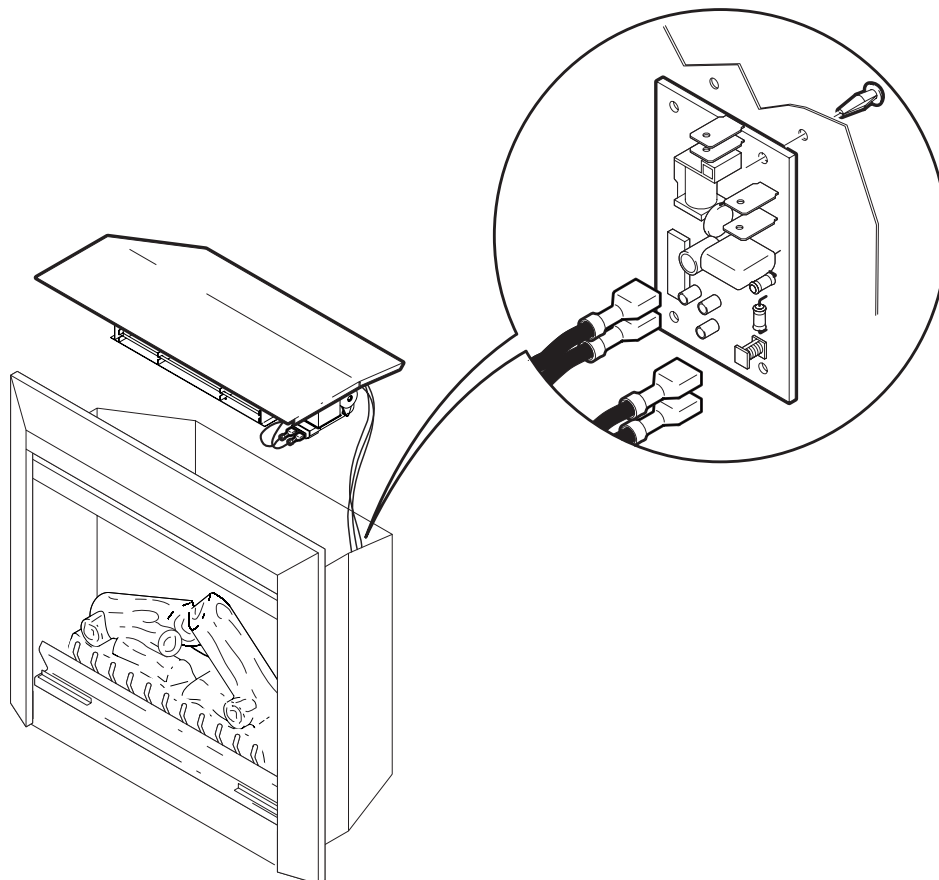


If unit was operating prior to servicing allow at least 10 minutes for light bulbs and heating element to cool off to avoid accidental burning of skin.

Disconnect power before attempting any maintenance or cleaning to reduce the risk of electric shock or damage to persons.

TO REPLACE THE CIRCUIT BOARD

1. Remove the 4 retaining screws and lift the top cover off of the insert being careful not to damage the wiring.
 2. Disconnect the wire connections from the circuit board noting their original locations.
 3. Lower the grill covering the controls.
 4. Remove the (10) retaining screws on the top panel and remove the top being careful not to damage any of the wiring.
 5. Remove wiring connections from circuit board noting their original locations.
 6. From inside the insert, break off the six mounting studs on the circuit board by grasping with pliers and twisting on the protruding part of the stud, push the remainder of the studs out through the top panel.
- NOTE:** New mounting studs are supplied with the replacement circuit board.
7. Properly orientate the new circuit board and connect all of the wiring connections.

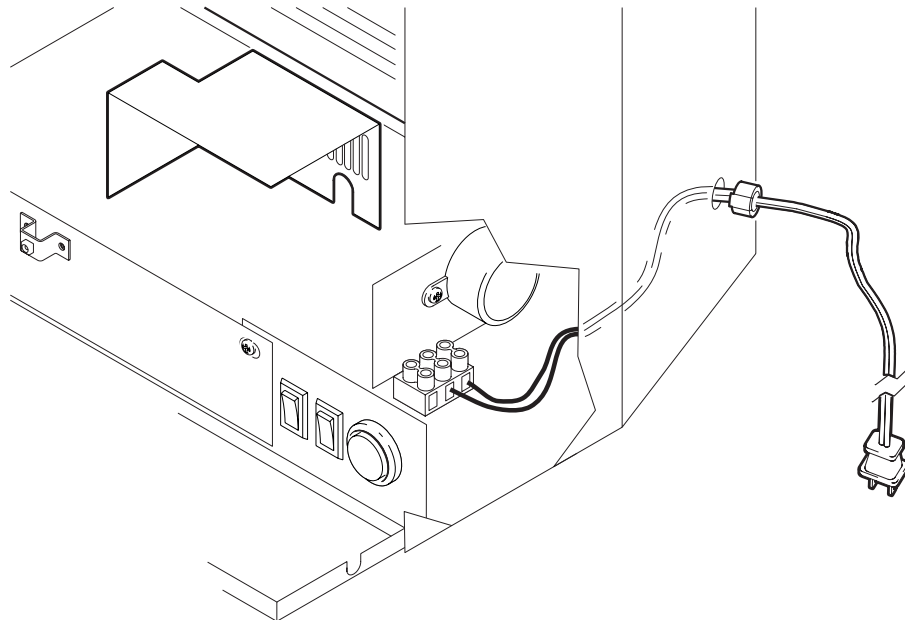


If unit was operating prior to servicing allow at least 10 minutes for light bulbs and heating element to cool off to avoid accidental burning of skin.

Disconnect power before attempting any maintenance or cleaning to reduce the risk of electric shock or damage to persons.

TO REPLACE THE POWER CORD

1. Open the front control cover.
2. Remove front glass by removing the 2 outer screws holding the glass clips.
3. Remove the log grate by removing the 4 mounting screws.
4. Remove the log set by lifting straight up.
5. Lay the insert on it's back and remove the 2 switch control cover screws located on the bottom of the insert.
6. Disconnect the power cord wires from the terminal block
7. With needle nose pliers grasp the power cord strain relief grommet from inside the rear panel and push while twisting to remove.
8. Pull the power cord out through the hole in the rear cover.
9. Install the new cord set through the hole in the rear cover by placing the strain relief over the cord, hold the strain relief with pliers and slide into mounting hole.
10. Connect all of the wiring connections in their original locations on the terminal block.
11. Reassemble in the reverse order as above.



If unit was operating prior to servicing allow at least 10 minutes for light bulbs and heating element to cool off to avoid accidental burning of skin.
Disconnect power before attempting any maintenance or cleaning to reduce the risk of electric shock or damage to persons.

TO REPLACE THE CAPACITOR AND TERMINAL BLOCK

1. Open the front control cover.
2. Remove front glass by removing the 2 outer screws holding the glass clips.
3. Remove the log grate by removing the 4 mounting screws.
4. Remove the log set by lifting straight up.
5. Slide the light assembly slightly and lift out of the insert being careful not to damage any of the wiring.
6. Remove the terminal block cover by removing the 2 retaining screws.
7. Disconnect the wiring from the terminal block noting their original locations.
8. Disconnect the capacitor from the terminal block.
9. Remove the terminal block from the light assembly.
10. Reassemble in the reverse order as above

