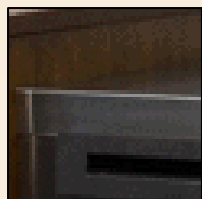


Marana Electric Fireplace

SAP-500-C

Media Console

Elevated above a modern stainless steel firebox enclosure, the sturdy, smoked-glass top creates a sleek display space for the latest wide-screen TVs. Medium cherry cabinets, accented with smoked-glass doors, provide ample room for storing equipment, DVDs and other essentials.



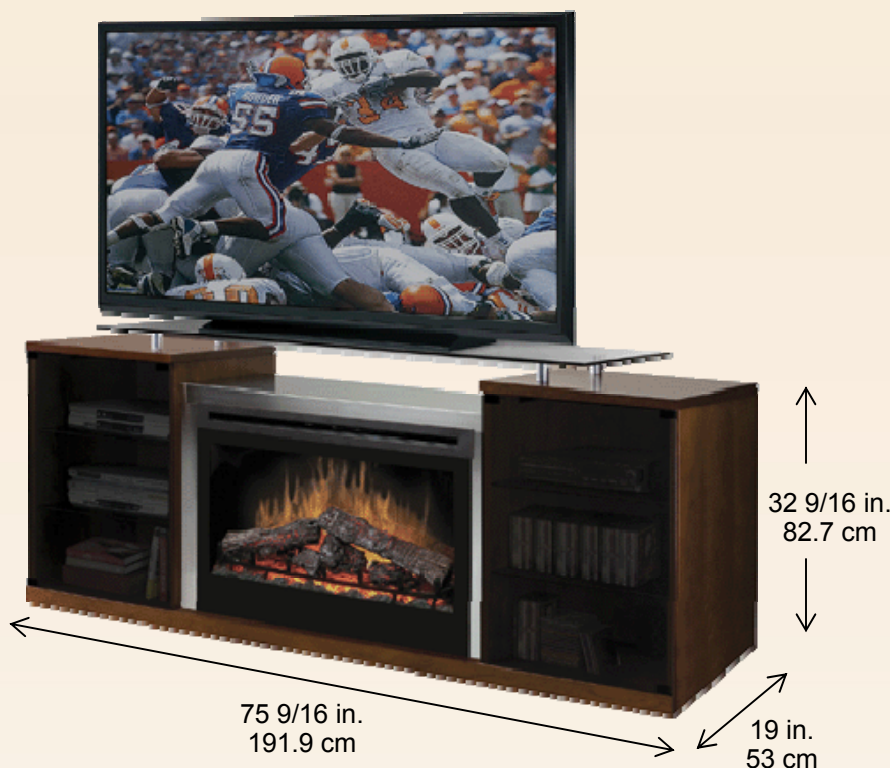
Stainless steel firebox enclosure



Elevated glass top



Smoked glass cabinet doors



Firebox

- 33" self-trimming widescreen electric firebox
- Patented, life-like flame effect
- Inner glow logs molded from wood logs for incredible realism
- On-demand heat with thermostat control warms a room or area of up to 400 sq. ft.
- Interior light and flame speed control
- Flame operates with or without heat
- 2¢ / hour with flame only
7¢ / hour with flame and heat*
- 120 Volts / 1,000 Watts / 3,415 BTU

TV and accessories not included



Includes multi-function remote control



Model #	Description	lbs / kg	UPC	Wty.	Carton Dimensions (W x H x D)		Cube		
					Inches	cm	ft ³	m ³	
SAP-500-C	Black media console package with 33" self trimming electric firebox.	320 / 146							
Package consists of three cartons:	DF3033ST – 33" electric firebox	60 / 27.5	781052 054271	5 yr.	37.3 x 27.6 x 13	94.6 x 70.1 x 33	7.7	0.22	
	SAM-C-5000B – Media console base	176 / 80	781052 054516	1 yr.	23 x 9.9 x 73.3	58.4 x 25.1 x 186.2	9.6	0.27	
	SAM-C-5000T – Media console top	84 / 38.2	781052 054523	1 yr.	24 x 5.1 x 61	61 x 13 x 154.9	4.3	0.12	

Specifications, finishes and dimensions are subject to change. Patent protected: for a complete list of applicable patents visit www.dimplex.com/patents.

*Based on average national residential electricity rates. Rates vary.

© 2009 Dimplex North America Limited.